

5



# WRITING TIME

**Adventures in handwriting**

*New South Wales Foundation Style*



# Writing Time 5 Contents

Writing Time Adventure Passport.....	1	<b>Poetry and Verse</b> .....	32
<b>Exploring Space</b> .....	2	Speed Loops (to ascenders); Letter Discrimination; Slope; Printing; Copying Chunks; Sustained Speed and Accuracy; Spacing	
Diagonal Joins to Neckline Entries; Cursive to Print; Diagonal Joins to Ascenders; Printing; Posture, Paper Position and Pencil Grip		Fine Motor Workout 4.....	39
<b>The Sun</b> .....	6	<b>Light and Reflection</b> .....	40
Diagonal Joins to Drop-ins; Print to Cursive; Printing; Labelling		Speed Loops (to and from <i>f</i> ); Labelling; Spacing to Fit; Copying Chunks; Slope; 8mm Lines; Printing; Capital Letters; Letter Size	
<b>Our Solar System</b> .....	10	<b>Adaptations of Living Things</b> .....	48
Horizontal Joins to Neckline Entries; Capital Letters; Posture, Paper Position and Pencil Grip		Speed Loops (to and from long <i>z</i> ); Slope; Letter Discrimination; Speed and Legibility	
Fine Motor Workout 1.....	13	Fine Motor Workout 5.....	53
<b>24-hour Time</b> .....	14	<b>My Point of View</b> .....	54
Horizontal Joins to Ascenders; Speed and Legibility; Horizontal Joins to Drop-ins		Joining Capitals; Flourished Writing; Signatures; Printing; Speed and Legibility; Letter Size	
<b>The History of Words</b> .....	16	<b>Assessment</b> .....	
Horizontal Joins to <i>e</i> ; Flourished Writing; Copying from Afar; Labelling; Horizontal joins to and from <i>f</i> ; Spacing		Assessment 1.....	62
<b>Picture Books</b> .....	20	Assessment 2.....	63
Joining to <i>s</i> ; Double <i>s</i> ; Print to Cursive; Printing; Slope		Assessment 3.....	64
Fine Motor Workout 2.....	23	Assessment 4.....	65
<b>Solid, Liquid and Gas</b> .....	24	Student Assessment Record.....	66
Joining from <i>b p</i> and <i>s</i> ; Posture, Paper Position and Pencil Grip; Copying from Afar		Teacher Assessment Record.....	67
<b>Units of Measurement</b> .....	28	Activity Answers.....	68
Speed Loops (from descenders); Numerals; Slope		Posture, Paper Position and Pencil Grip.....	69
Fine Motor Workout 3.....	31		

Visit [writingtimeonline.com.au](http://writingtimeonline.com.au) for handwriting assessment tools, classroom resources, the Curriculum Links and more.

## The Sun

We all need energy to carry out our daily activities. Our energy comes from the food we eat. The sun is the largest source of the Earth's energy.



**Diagonal Joins to Drop-ins:** Copy these joins and words relating to the sun. Remember, the join requires a pencil lift.

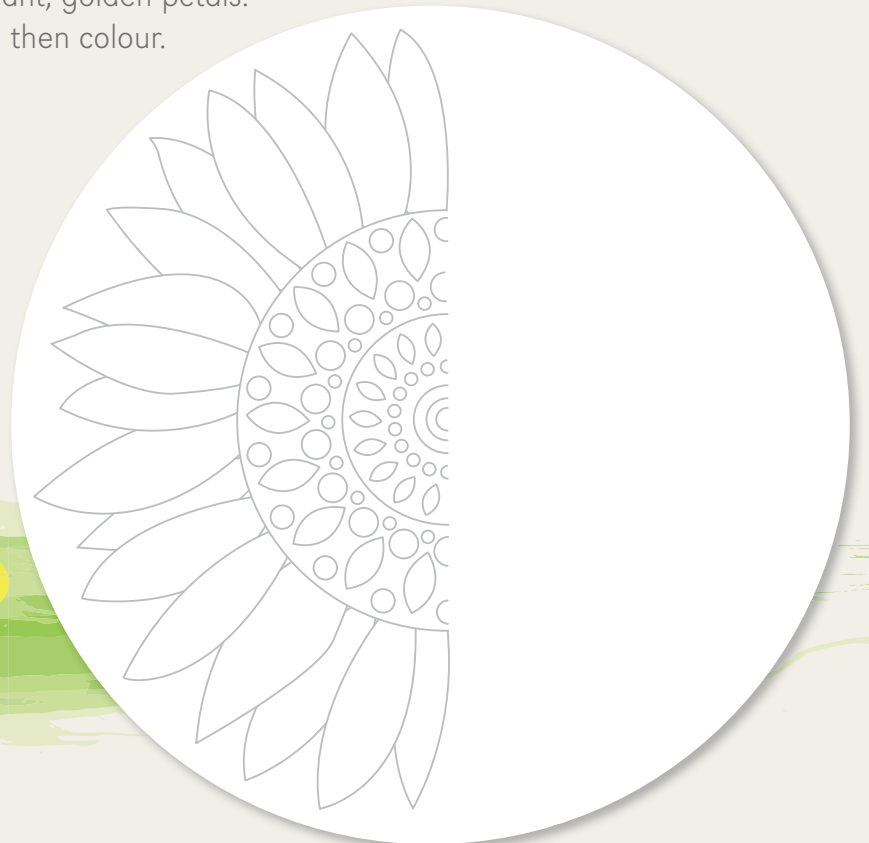
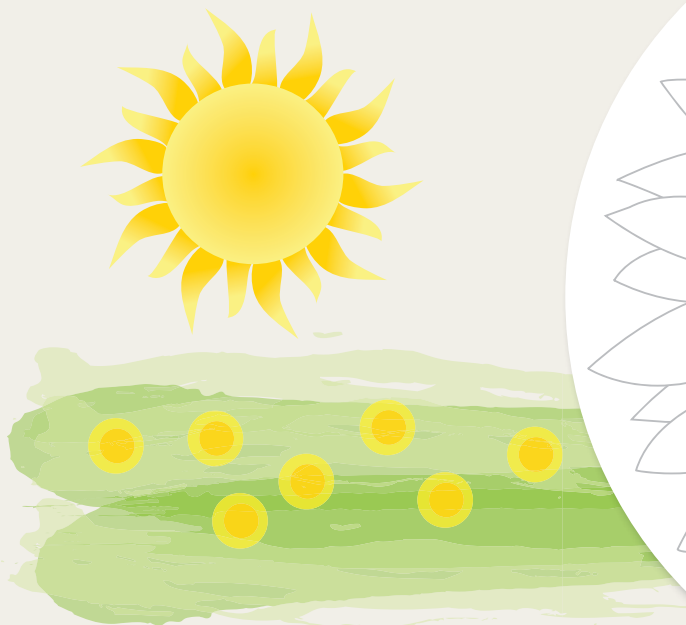
ac → aċ → aċ → ac

aċ ad af ag ao aq ca cc co dd dg ea ec ed ef eq ha

ho ia ic id if io ka la lf lo ma mo na no ta ud uf

flare solar heat atmosphere eclipse corona surface core

**Fine Motor Skills:** Sunflowers have vibrant, golden petals. Complete the other half of the sunflower, then colour.



**Print to Cursive:** Rewrite in cursive this paragraph about the sun's energy. Focus on your joins.

The sun is at the centre of the solar system and is an amazingly

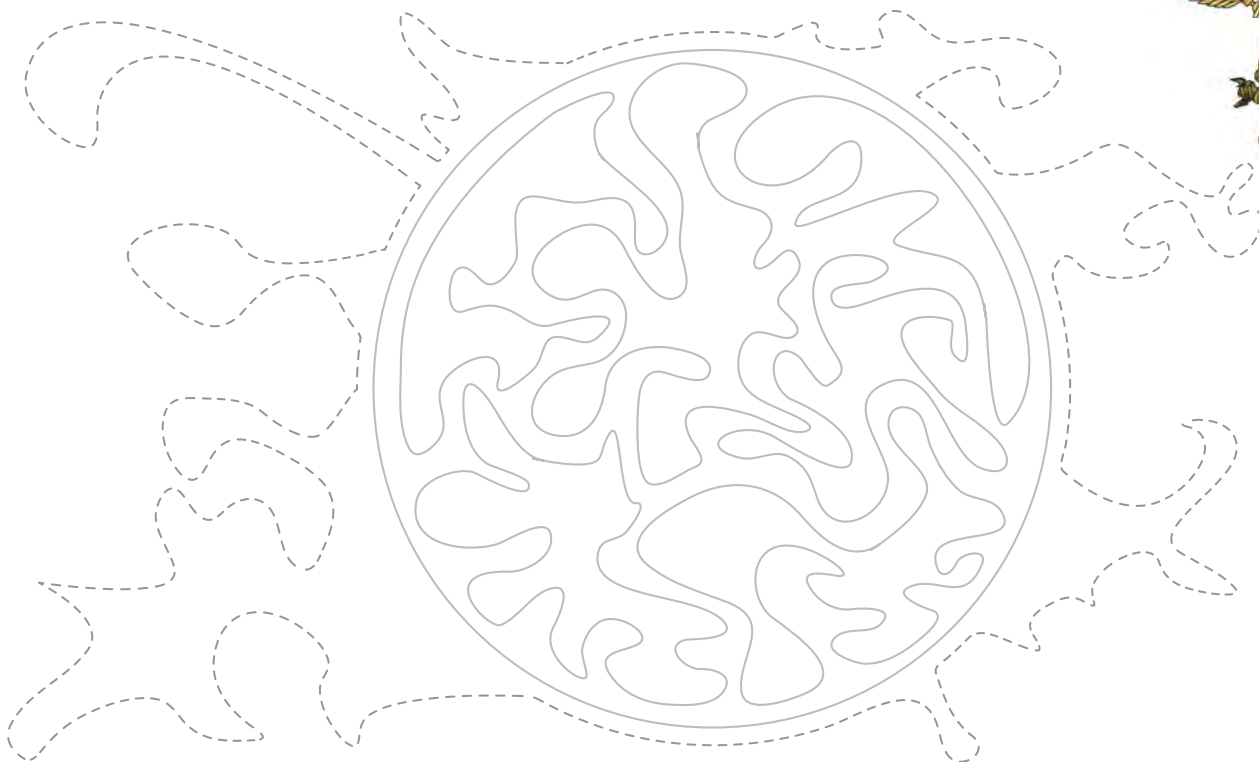
powerful source of energy. In fact, the amount of sunlight the

Earth receives in just one hour could supply all the countries on

Earth with their energy needs for a whole year!

**Fine Motor Skills:** Trace and colour the sun and solar flares. Use red, orange and yellow.

Solar flares are tremendous eruptions on the surface of the sun.



**Printing:** Unscramble these letters to find words relating to the sun and energy.  
Copy each word in print, cursive and capitals.

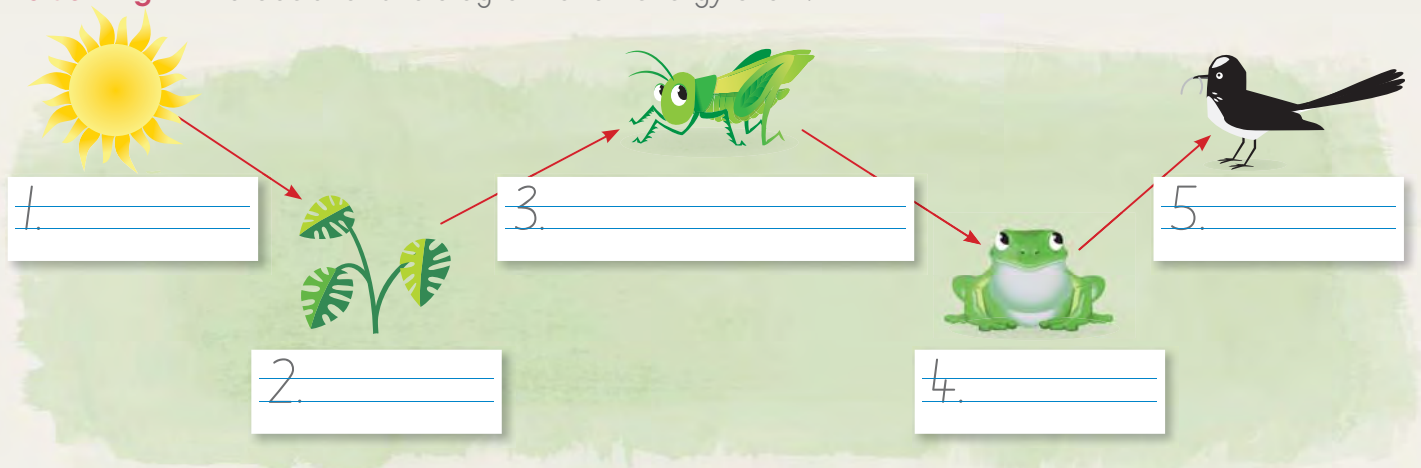
Letters	Print	Cursive	Capitals
alsor	s		
rvocnet	c		
geenry	e		
ynsun	s		
stulnigh	s		
rrnsafte	t		
woerp	p		
nubrt	b		
fraceus	s		
sayr	r		
enertage	g		
thea	h		

Copy the meaning beside each word.

- |                                  |                        |                    |
|----------------------------------|------------------------|--------------------|
| 1. a measure of heat or cold     | 4. a source of supply  | 6. our star        |
| 2. the ability to do work        | 5. relating to the sun | 7. change or alter |
| 3. resources that do not run out |                        |                    |

Word	Meaning
energy	
solar	
convert	
renewable	
resource	
temperature	
sun	

**Labelling:** Print labels for this diagram of an energy chain.



Complete this passage using the words from the energy chain diagram.

Plants absorb solar energy from the \_\_\_\_\_.

Plants convert solar energy to chemical energy.

The \_\_\_\_\_ is eaten by the \_\_\_\_\_

which is eaten by the \_\_\_\_\_. The frog is then eaten by

the \_\_\_\_\_. Energy is transferred from the \_\_\_\_\_

to the \_\_\_\_\_, to the \_\_\_\_\_, to the \_\_\_\_\_

and then to the \_\_\_\_\_.

Copy. Focus on the diagonal joins to neckline entries.

ai am an cr dr em en ix kn lm mm mn tr um uz

solar power energy thermal transfer immense plant tree

### Reflection

Circle your best diagonal joins on this page.

### Picture Mix-up

Lucy's documents have become mixed up. Help her put the image together using the numbers as a guide, then colour. Do you know what animal it is?

Answer: \_\_\_\_\_



9	14	5	10	
				12
4	3	7	1	11
15	2	8	13	6
1	2	3	4	5
6	7	8	9	10
11	12	13	14	15